

LIGHTWORKS-USER

# LWA™ Downloads

*Productivity enhancing resources and add-ons for LightWorks-based applications*



**LWA™** is an exciting new plug-in technology from LightWork Design for LWA-Enabled™ applications, that makes it easier to create more accurate images faster. To browse the currently available LWA™ plug-ins please select from the categories below.

**LWA-Enabled™:** look for the LWA-Enabled™ logo on your software. [Read more...](#) If your product has this logo, it is already LWA-Enabled™, so you can easily import LightWorks archives into the application. If your application is not yet LWA-Enabled™, then please contact the company that develops the application, and ask them if they are planning to become LWA-Enabled™. They can then contact us to find out how.

[Here](#) is a chance to shape the future of LightWorks Content Archives. Do you have a specific paint brand, or a plastics supplier you'd like to include in your designs? A brick manufacturer you'd like to specify for that additional realism? Now's your chance to ask us for it...

## Categories:

[AEC Materials](#)

[Colour Libraries](#)

[Environment Maps](#)

[Essential Materials](#)

[Light Studios](#)

[MCAD and Product Design Materials](#)

[Mold-Tech Patterns](#)

[Roehlen Patterns](#)

[Scenery](#)

[UNS Metals](#)

Bricks

Free of charge

Over 350 brick materials. The bricks are specified using accurate real-world dimensions for brick and mortar, and categorised into Imperial and Metric families. Each material allows the brick bond to be selected - giving a total of 2100 variations!

To use this archive your application must support LWA-Enabled: Architectural functionality

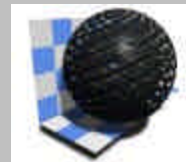


Fencing

Free of charge

Diamond mesh and wrought iron fencing.

To use this archive your application must support LWA-Enabled: Base functionality



Flooring

Free of charge

Over 50 flooring materials, including tiles, floorboards and wood parquet patterns.

To use this archive your application must support LWA-Enabled: Architectural functionality



Laminates

Free of charge

Wood and plain plastic laminated woods.

To use this archive your application must support LWA-Enabled: Base functionality



Paint starter pack

Free of charge

Starter pack of gloss and high-gloss paint finishes.

To use this archive your application must support LWA-Enabled: Base functionality



## Paving materials

Free of charge

Paving setts, irregular paving and cobblestones.

To use this archive your application must support LWA-Enabled: Architectural functionality



## Roadway materials

Free of charge

Over 15 asphalt and concrete materials for roads, highways and paths.

To use this archive your application must support LWA-Enabled: Base functionality



## Wall starter pack

Free of charge

Starter pack of materials for walls, including building blocks, wallpaper, stone and tiles.

To use this archive your application must support LWA-Enabled: Architectural functionality



## Window glass

Free of charge

Over 20 glazing materials, including plain, coloured, etched and rippled glass.

To use this archive your application must support LWA-Enabled: Architectural or Industrial functionality



BSColours: British Standard Colours

\$20

The 237 colours in the BS5252 standard and the 98 colours in the BS4800 standard.

To use this archive your application must support LWA-Enabled: Base functionality



RALClassic: RAL Classic non-metallic colour standard

\$10

The 195 non-metallic colours in the RAL Classic colour standard

To use this archive your application must support LWA-Enabled: Base functionality



RALClassicMetallic: Complete RAL Classic colour standard

\$15

The 195 non-metallic colours and the 15 metallic colours in the RAL Classic colour standard. (This archive includes the "RAL Classic non-metallic colour standard" archive)

To use this archive your application must support LWA-Enabled: Industrial functionality



RALDesign: Complete RAL Design colour standard

\$18

The 1688 colours in the RAL Design colour standard

To use this archive your application must support LWA-Enabled: Base functionality



Category » Environment Maps

(4 Items )

Belfort square

Free of charge

Environment map of main square in Belfort, France.

To use this archive your application must support LWA-Enabled: Base functionality



Ginza intersection

Free of charge

Environment map of road intersection on Ginza shopping street, Tokyo.

To use this archive your application must support LWA-Enabled: Base functionality



Narita temple

Free of charge

Environment map of Narita temple grounds, Chiba-ken, Japan.

To use this archive your application must support LWA-Enabled: Base functionality



New York

Free of charge

Environment map of New York skyline, USA.

To use this archive your application must support LWA-Enabled: Base functionality



## Category » Essential Materials

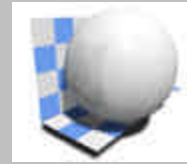
(9 Items )

### Ceramic material starter pack

Free of charge

Materials for tableware, crockery and tiles.

To use this archive your application must support LWA-Enabled: Base functionality



### Geometric patterns

Free of charge

A range of grids, checkers and polka-dots.

To use this archive your application must support LWA-Enabled: Base functionality



### Leathers

Free of charge

Over 40 leathers for automotive and furniture design.

To use this archive your application must support LWA-Enabled: Architectural or Industrial functionality



### Liquids

Free of charge

Water, wines and whisky.

To use this archive your application must support LWA-Enabled: Base functionality



### Nature

Free of charge

Materials from nature: Animal, vegetable and mineral.

To use this archive your application must support LWA-Enabled: Architectural or Industrial functionality

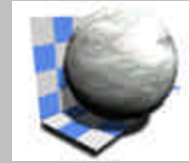


## Paper

Free of charge

Patterned papers and corrugated cardboard.

To use this archive your application must support LWA-Enabled: Base functionality

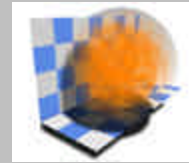


## Special effects

Free of charge

Weird plasma glows.

To use this archive your application must support LWA-Enabled: Special Effects functionality



## Textile starter pack

Free of charge

Range of denim, satin and other textiles.

To use this archive your application must support LWA-Enabled: Architectural or Industrial functionality



## Wood

Free of charge

Over 50 wood types and finishes.

To use this archive your application must support LWA-Enabled: Architectural functionality



## Category » Light Studios

(2 Items )

### Interior Light Studios

Free of charge

Range of light studios for illuminating interiors.

To use this archive your application must support LWA-Enabled: Base functionality



### Object Light Studios

Free of charge

Range of light studios for illuminating single objects.

To use this archive your application must support LWA-Enabled: Base functionality



## Category » MCAD and Product Design Materials

(4 Items )

### Electrics

Free of charge

Starter pack of materials for simulating LEDs.

To use this archive your application must support LWA-Enabled: Special Effects functionality



### Metals

Free of charge

Over 115 metal materials, including aluminium, brass, bronze, chromium, copper, etc, and anodised, brushed, knurled and treadplate finishes.

To use this archive your application must support LWA-Enabled: Industrial functionality



### Plastics

Free of charge

Over 190 plastic materials, including ABS and PPC, etc, molded and translucent plastics.

To use this archive your application must support LWA-Enabled: Industrial functionality



### Rubber materials

Free of charge

A range of smooth and dimpled rubber materials.

To use this archive your application must support LWA-Enabled: Base functionality



MoldTechEUBrushed1: Brushed European Mold-Tech pattern for product designers \$10

Brushed European Mold-Tech pattern: MT9082  
Rendering of Mold-Tech patterns is [exclusive to LightWorks](#).

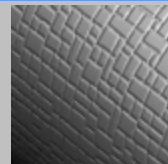
To use this archive your application must support LWA-Enabled: Architectural or Industrial functionality



MoldTechEUDecorative1: Decorative European Mold-Tech pattern for product designers \$10

Decorative European Mold-Tech pattern: MT9012  
Rendering of Mold-Tech patterns is [exclusive to LightWorks](#).

To use this archive your application must support LWA-Enabled: Architectural or Industrial functionality



MoldTechEUGeometric1: Geometric European Mold-Tech patterns for product designers \$60

Geometric European Mold-Tech patterns: MT9000, MT9002, MT9003, MT9006, MT9081, MT9083

Rendering of Mold-Tech patterns is [exclusive to LightWorks](#).

To use this archive your application must support LWA-Enabled: Architectural or Industrial functionality



MoldTechEUHaircell1: Haircell finish European Mold-Tech patterns for product designers \$10

Haircell European Mold-Tech pattern: MT9036  
Rendering of Mold-Tech patterns is [exclusive to LightWorks](#).

To use this archive your application must support LWA-Enabled: Architectural or Industrial functionality



MoldTechEULeather1: Leather European Mold-Tech patterns for product designers \$60

Leather European Mold-Tech patterns: MT9104, MT9106, MT9108, MT9110, MT9111, MT9112

Rendering of Mold-Tech patterns is [exclusive to LightWorks](#).

To use this archive your application must support LWA-Enabled: Architectural or Industrial functionality

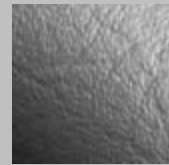


MoldTechEULeather3: Leather European Mold-Tech patterns for product designers \$50

Leather European Mold-Tech patterns: MT9040, MT9041, MT9044, MT9061, MT9062

Rendering of Mold-Tech patterns is [exclusive to LightWorks](#).

To use this archive your application must support LWA-Enabled: Architectural or Industrial functionality



MoldTechEUOrangePeel1: Orange peel European Mold-Tech patterns for product designers \$80

Orange peel European Mold-Tech patterns: MT9020, MT9021, MT9085, MT9087, MT9090, MT9102, MT9125, MT9133

Rendering of Mold-Tech patterns is [exclusive to LightWorks](#).

To use this archive your application must support LWA-Enabled: Architectural or Industrial functionality



Paint finish European Mold-Tech patterns for product designers \$90

Paint Finish European Mold-Tech patterns:

Rendering of Mold-Tech patterns is [exclusive to LightWorks](#).

To use this archive your application must support LWA-Enabled: Architectural Toolbox or Industrial Toolbox functionality



MoldTechEUPebbles1: Pebbles European Mold-Tech patterns for product designers \$70

Pebbles European Mold-Tech patterns: MT9011, MT9019, MT9022, MT9024, MT9025, MT9107, MT9117

Rendering of Mold-Tech patterns is [exclusive to LightWorks](#).

To use this archive your application must support LWA-Enabled: Architectural or Industrial functionality



MoldTechEUReticulation1: Reticulation European Mold-Tech patterns for product designers \$30

Reticulation Mold-Tech patterns: MT9018, MT9023, MT9038  
Rendering of Mold-Tech patterns is [exclusive to LightWorks](#).

To use this archive your application must support LWA-Enabled: Architectural or Industrial functionality



MoldTechEUStipple1: Stipple European Mold-Tech pattern for product designers \$10

Stipple European Mold-Tech pattern: MT9039  
Rendering of Mold-Tech patterns is [exclusive to LightWorks](#).

To use this archive your application must support LWA-Enabled: Architectural or Industrial functionality



MoldTechEUTextile1: Textile European Mold-Tech patterns for product designers \$40

Textile European Mold-Tech patterns: MT9013, MT9015, MT9016, MT9017  
Rendering of Mold-Tech patterns is [exclusive to LightWorks](#).

To use this archive your application must support LWA-Enabled: Architectural or Industrial functionality



MoldTechEUWoodgrain1: Wood European Mold-Tech patterns for product designers \$20

Wood European Mold-Tech patterns: MT9008, MT9009  
Rendering of Mold-Tech patterns is [exclusive to LightWorks](#).

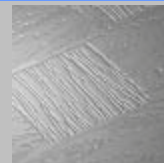
To use this archive your application must support LWA-Enabled: Architectural or Industrial functionality



MoldTechEUWoodgrain2: Wood European Mold-Tech pattern for product designers \$10

Wood European Mold-Tech pattern: MT9010  
Rendering of Mold-Tech patterns is [exclusive to LightWorks](#).

To use this archive your application must support LWA-Enabled: Architectural or Industrial functionality



MoldTechUSGeometric1: Geometric Mold-Tech patterns for product designers. \$50

Geometric Mold-Tech patterns: MT11600, MT11605, MT11605A, MT11620, MT11640

Rendering of Mold-Tech patterns is [exclusive to LightWorks](#).

To use this archive your application must support LWA-Enabled: Architectural or Industrial functionality

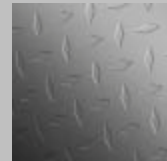


Geometric Mold-Tech patterns for product designers \$20

Geometric Mold-Tech patterns: MT11630, MT11660

Rendering of Mold-Tech patterns is [exclusive to LightWorks](#).

To use this archive your application must support LWA-Enabled: Architectural or Industrial functionality

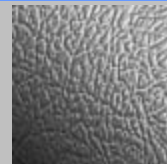


MoldTechUSLeather1: Leather Mold-Tech patterns for product designers. \$90

Leather Mold-Tech patterns: MT11200, MT11205, MT11216, MT11235, MT11245, MT11250, MT11265, MT11280, MT11310

Rendering of Mold-Tech patterns is [exclusive to LightWorks](#).

To use this archive your application must support LWA-Enabled: Architectural or Industrial functionality



MoldTechUSLeather2: Leather Mold-Tech patterns for product designers. \$40

Leather Mold-Tech patterns: MT11435, MT15145, MT15160, MT4478

Rendering of Mold-Tech patterns is [exclusive to LightWorks](#).

To use this archive your application must support LWA-Enabled: Architectural or Industrial functionality

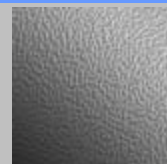


MoldTechUSOrangePeel1: Orange peel Mold-Tech patterns for product designers. \$60

Orange peel Mold-Tech patterns: MT11345, MT11350, MT11365, MT11415, MT11420, MT11430

Rendering of Mold-Tech patterns is [exclusive to LightWorks](#).

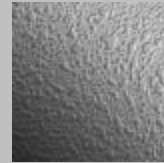
To use this archive your application must support LWA-Enabled: Architectural or Industrial functionality



MoldTechUSPaintFinish1: Paint finish Mold-Tech patterns for product designers. \$90

Paint finish Mold-Tech patterns: MT11120, MT11130, MT11140, MT11150, MT11155, MT11160, MT11240, MT11565A, MT11565B  
Rendering of Mold-Tech patterns is [exclusive to LightWorks](#).

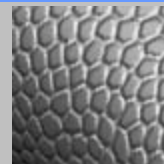
To use this archive your application must support LWA-Enabled: Architectural or Industrial functionality



MoldTechUSPebble1: Pebble Mold-Tech patterns for product designers. \$20

Pebble Mold-Tech patterns: MT11315, MT9123  
Rendering of Mold-Tech patterns is [exclusive to LightWorks](#).

To use this archive your application must support LWA-Enabled: Architectural or Industrial functionality



MoldTechUSReticulation1: Reticulation Mold-Tech pattern for product designers. \$10

Reticulation Mold-Tech pattern: MT11340  
Rendering of Mold-Tech patterns is [exclusive to LightWorks](#).

To use this archive your application must support LWA-Enabled: Architectural or Industrial functionality



Mold-Tech starter pack for product designers.

Free of charge

Pack of 3 representative Mold-Tech patterns:  
MT11090, MT11345, MT11600  
Rendering of Mold-Tech patterns is [exclusive to LightWorks](#).

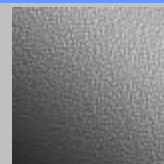
To use this archive your application must support LWA-Enabled: Architectural or Industrial functionality



MoldTechUSStipple1: Stipple Mold-Tech patterns for product designers. \$60

Stipple Mold-Tech patterns: MT1055-1, MT11020, MT11030, MT11060, MT11080, MT11090  
Rendering of Mold-Tech patterns is [exclusive to LightWorks](#).

To use this archive your application must support LWA-Enabled: Architectural or Industrial functionality



MoldTechUSStipple2: Stipple Mold-Tech patterns for product designers \$80

Stipple Mold-Tech patterns: MT1055-1, MT1055-2, MT1055-3, MT1055-4, MT1055-5, MT1055-6, MT1055-7, MT1055-8

Rendering of Mold-Tech patterns is [exclusive to LightWorks](#).

To use this archive your application must support LWA-Enabled: Architectural or Industrial functionality

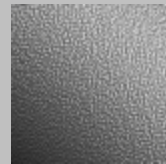


MoldTechUSStipple3: Stipple Mold-Tech patterns for product designers \$20

Stipple Mold-Tech patterns: MT11010, MT11070

Rendering of Mold-Tech patterns is [exclusive to LightWorks](#).

To use this archive your application must support LWA-Enabled: Architectural or Industrial functionality

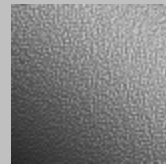


MoldTechUSStipple3: Stipple Mold-Tech patterns for product designers \$20

Stipple Mold-Tech patterns: MT11010, MT11070

Rendering of Mold-Tech patterns is [exclusive to LightWorks](#).

To use this archive your application must support LWA-Enabled: Architectural or Industrial functionality

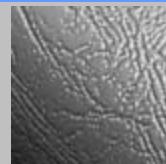


MoldTechEULeather5: Leather European Mold-Tech patterns for product designers \$30

Leather European Mold-Tech patterns: MT9048, MT9049, MT9063

Rendering of Mold-Tech patterns is [exclusive to LightWorks](#).

To use this archive your application must support LWA-Enabled: Architectural or Industrial functionality

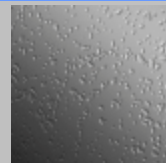


MoldTechUSWoodgrain1: Woodgrain Mold-Tech patterns for product designers \$10

Woodgrain Mold-Tech pattern: MT11550

Rendering of Mold-Tech patterns is [exclusive to LightWorks](#).

To use this archive your application must support LWA-Enabled: Architectural or Industrial functionality



## RoehlenDecorative1: Decorative Roehlen patterns for product designers \$30

Decorative Roehlen patterns: 79RE54, 82RE73 and 92RE64  
Rendering of Mold-Tech patterns is [exclusive to LightWorks](#).

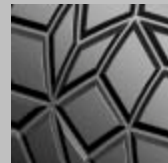
To use this archive your application must support LWA-Enabled: Architectural or Industrial functionality



## RoehlenGeometric1: Geometric Roehlen patterns for product designers \$30

Geometric Roehlen patterns: 244RE95, 244RE96 and 64RE04  
Rendering of Mold-Tech patterns is [exclusive to LightWorks](#).

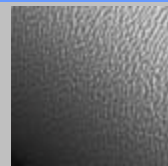
To use this archive your application must support LWA-Enabled: Architectural or Industrial functionality



## RoehlenReticulation1: Reticulation Roehlen pattern for product designers \$10

Reticulation Roehlen pattern: 84RE79  
Rendering of Mold-Tech patterns is [exclusive to LightWorks](#).

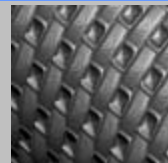
To use this archive your application must support LWA-Enabled: Architectural or Industrial functionality



## RoehlenTextile1: Textile Roehlen patterns for product designers \$10

Textile Roehlen pattern: 56RE40-2  
Rendering of Mold-Tech patterns is [exclusive to LightWorks](#).

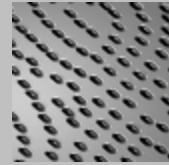
To use this archive your application must support LWA-Enabled: Architectural or Industrial functionality



RoehlenUSGeometric1: Geometric Roehlen patterns for product designers. \$20

Geometric Roehlen patterns:244RE51, 244RE69  
Rendering of Roehlen patterns is [exclusive to LightWorks](#).

To use this archive your application must support LWA-Enabled: Architectural or Industrial functionality



RoehlenUSLeather1: Leather Roehlen patterns for product designers. \$50

Leather Roehlen patterns:243RE28, 244DP71, 244RE50, 244RE55, 244RE57  
Rendering of Roehlen patterns is [exclusive to LightWorks](#).

To use this archive your application must support LWA-Enabled: Architectural or Industrial functionality

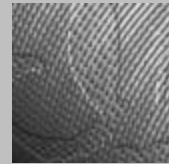


Roehlen starter pack.

Free of charge

Pack of 3 representative Roehlen patterns:244RE51, 244RE54, 244RE57  
Rendering of Roehlen patterns is [exclusive to LightWorks](#).

To use this archive your application must support LWA-Enabled: Architectural or Industrial functionality



RoehlenUSTextile1: Textile Roehlen patterns for product designers. \$30

Textile Roehlen patterns:244RE52, 244RE54, 244RE59  
Rendering of Roehlen patterns is [exclusive to LightWorks](#).

To use this archive your application must support LWA-Enabled: Architectural or Industrial functionality



Category » Scenery

(1 Item)

Scenery starter pack

Free of charge

A range of 3D scenery for using as backdrops for models. The use of scenery puts models 'in-context' for enhanced realism.

To use this archive your application must support LWA-Enabled: Base functionality



**Category » UNS Metals**

**(10 Items )**

**UNSMetalsAluminum1**

**Free of charge**

A full range of over 550 UNS Aluminum Alloys

To use this archive your application must support LWA-Enabled: Architectural or Industrial functionality



**UNSMetalsIronsCast1**

**Free of charge**

A range of over 50 UNS Cast Irons

To use this archive your application must support LWA-Enabled: Architectural or Industrial functionality



**UNSMetalsReactive1**

**Free of charge**

A full selection of over 150 UNS Reactive Alloys

To use this archive your application must support LWA-Enabled: Architectural or Industrial functionality



**UNSMetalsStarterPack1**

**Free of charge**

A broad mix of 45 different UNS Metals

To use this archive your application must support LWA-Enabled: Architectural or Industrial functionality



**UNSMetalsSteelsCarbon1**

**Free of charge**

A full range of over 150 UNS Carbon Steels

To use this archive your application must support LWA-Enabled: Architectural or Industrial functionality



## UNSMetalsSteelsCast1

Free of charge

A range of over 50 UNS Cast Steels

To use this archive your application must support LWA-Enabled: Architectural or Industrial functionality



## UNSMetalsSteelsH1

Free of charge

A wide range of over 60 UNS Standard Steels

To use this archive your application must support LWA-Enabled: Architectural or Industrial functionality



## UNSMetalsSteelsHeatResistant1

Free of charge

A wide range of over 150 UNS Heat-Resistant Steels

To use this archive your application must support LWA-Enabled: Architectural or Industrial functionality



## UNSMetalsSteelsMiscellaneous1

Free of charge

A large range of over 400 UNS Miscellaneous Steels

To use this archive your application must support LWA-Enabled: Architectural or Industrial functionality



## UNSMetalsSteelsTool1

Free of charge

A range of over 50 UNS Tool Steels

To use this archive your application must support LWA-Enabled: Architectural or Industrial functionality

